



ALUMINIUM RADIATORS

oscar & oscar tondo

A tall, vertical radiator with a giraffe sculpture next to it in a room with a window. The radiator is a light grey color with vertical slats. The giraffe is a wooden sculpture with a brown and tan pattern. The room has a white wall, a light-colored tiled floor, and a window on the left showing a view of a building and water. A small, round, patterned ceramic pot sits on the floor near the radiator.

# oscar tondo

Simple and straightforward design to implement a technological heart: high thickness of the water channel, an exclusive welding process to fuse die-cast and extruded aluminum.

Oscar is the concrete answer to the public spaces, hotels and private needs. Is the result of the Global continuous technological and aesthetic research.

## **GLOBAL provides a 10 year warranty from the production date**

(stamped on the side of each sections)  
The conventional warranty grants the sole right to free replacement of the radiator which, due to defects originating from defects in material or workmanship, is not fit for purpose or its ordinary intended use. Replacement radiators shall be delivered free of charge to the retailer who sold the radiator to the end customer or his installer.

The warranty is valid on the condition that the installation and the system to which the product is connected are performed by qualified/authorised personnel to top workmanship standards and in compliance with the regulations and requirements of the sector in force; it is also valid on the condition that there has been full compliance with warnings and instructions for proper installation, use and maintenance of the product indicated in the technical documentation under the paragraph entitled *correct installation, use and maintenance instructions*, available and downloadable from the *TECHNICAL INFO* section on the [globalradiatori.it](http://globalradiatori.it) website. The warranty is regulated by further conditions indicated in the technical catalogue and the CONVENTIONAL WARRANTY section on the [globalradiatori.it](http://globalradiatori.it) website.





oscar

**HIGH THERMAL OUTPUT** Guaranteed by certification, according to the norm EN 442, from the *Politecnico* in Milan. The high thermal output allows less bulky radiators to be installed.

**ENERGY SAVING WITH MAXIMUM COMFORT** With the Global radiators the regulation of the temperature is easy and inexpensive. An ideal temperature for every environment according to personal needs is rapidly achieved.

**VERY LONG DURATION** Thanks to the high quality of the material, that gives the maximum guarantee of resistance and duration. The double protection in the "anaphoresis-bath" followed with epoxy power enameling guarantees a perfect and durable finish.

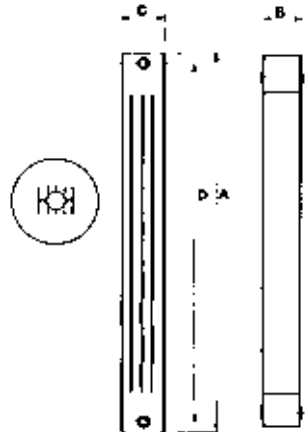
**EASIER INSTALLATION** Due to the lightness of the aluminum and the sectional elements that allow greater ease and flexibility of installation.

**CERTIFIED QUALITY AND ENVIRONMENTAL** The ICIM certified on 1994 (norm ISO 9001:2000) the Quality System and on 2001 (norm UNI EN ISO 14001) the System of Environmental Management.

Model	dimensions mm				Ø connection	dry weight approx. Kg	water content litres	heat output EN 442		exponent n	coefficient Km
	A	B	C	D				ΔT 50°C	ΔT 30°C		
	overall height	width	depth	pipe centres				Watts	Watts		
OSCAR 2000	2046	80	95	2000	1"	3,86	0,76	<b>321</b>	161	1,35280	1,61490
OSCAR 1800	1846	80	95	1800	1"	3,53	0,69	<b>297</b>	148	1,35295	1,48966
OSCAR 1600	1646	80	95	1600	1"	3,18	0,62	<b>271</b>	136	1,35310	1,36136
OSCAR 1400	1446	80	95	1400	1"	2,80	0,56	<b>245</b>	123	1,35325	1,23096
OSCAR 1200	1246	80	95	1200	1"	2,43	0,49	<b>218</b>	109	1,35340	1,09584
OSCAR 1000	1046	80	95	1000	1"	2,05	0,42	<b>190</b>	95	1,35355	0,95514
OSCAR 900	946	80	95	900	1"	1,99	0,41	<b>175</b>	88	1,34630	0,90160
OSCAR TONDO 2000	2046	80	95	2000	1"	3,86	0,76	<b>321</b>	161	1,35280	1,61490
OSCAR TONDO 1800	1846	80	95	1800	1"	3,53	0,69	<b>297</b>	148	1,35295	1,48966
OSCAR TONDO 1600	1646	80	95	1600	1"	3,18	0,62	<b>271</b>	136	1,35310	1,36136
OSCAR TONDO 1400	1446	80	95	1400	1"	2,80	0,56	<b>245</b>	123	1,35325	1,23096
OSCAR TONDO 1200	1246	80	95	1200	1"	2,43	0,49	<b>218</b>	109	1,35340	1,09584
OSCAR TONDO 1000	1046	80	95	1000	1"	2,05	0,42	<b>190</b>	95	1,35355	0,95514
OSCAR TONDO 900	946	80	95	900	1"	1,99	0,41	<b>175</b>	88	1,34630	0,90160

\* 1 Watt = 0,863 Kcal/h

The heat output is certified in according to the norm EN 442.



### EXAMPLE FOR A DIFFERENT ΔT FROM ΔT 50°C

If you need to know a radiator heat output (P) with different ΔT from Δt 50°C, use the following characteristic equation:  $P = Km \cdot \Delta T^n$   
 Example for the Oscar 1600 model with ΔT = 60°C  
 $P = 1,36136 \cdot 60^{1,35310} = 347 \text{ Watt}$

### EXAMPLE OF HEAT OUTPUT READINGS WITH DIFFERENT ΔT FROM ΔT 50°C

Model	ΔT 20°C	ΔT 25°C	ΔT 30°C	ΔT 35°C	ΔT 40°C	ΔT 45°C	ΔT 50°C	ΔT 55°C	ΔT 60°C
OSCAR 2000	93	126	161	198	237	278	<b>321</b>	365	411
OSCAR 1800	86	116	148	183	219	257	<b>297</b>	337	379
OSCAR 1600	78	106	136	167	200	235	<b>271</b>	308	347
OSCAR 1400	71	96	123	151	181	213	<b>245</b>	279	314
OSCAR 1200	63	85	109	135	161	189	<b>218</b>	248	279
OSCAR 1000	55	75	95	118	141	165	<b>190</b>	217	244
OSCAR 900	51	69	88	108	129	152	<b>175</b>	199	223
OSCAR TONDO 2000	93	126	161	198	237	278	<b>321</b>	365	411
OSCAR TONDO 1800	86	116	148	183	219	257	<b>297</b>	337	379
OSCAR TONDO 1600	78	106	136	167	200	235	<b>271</b>	308	347
OSCAR TONDO 1400	71	96	123	151	181	213	<b>245</b>	279	314
OSCAR TONDO 1200	63	85	109	135	161	189	<b>218</b>	248	279
OSCAR TONDO 1000	55	75	95	118	141	165	<b>190</b>	217	244
OSCAR TONDO 900	51	69	88	108	129	152	<b>175</b>	199	223

The expected heat output is obtained by observing the distances specified below:

- ≥ cm 3 from the wall
- ≥ cm 10 from the floor
- ≥ cm 10 from the shelf or window-sills

In order to prevent the thermal expansion of the system from causing noise in correspondence with the heaters, it is advisable to use plastic brackets to support the radiators (items A004, A025, A027 or A029 in our catalogue).

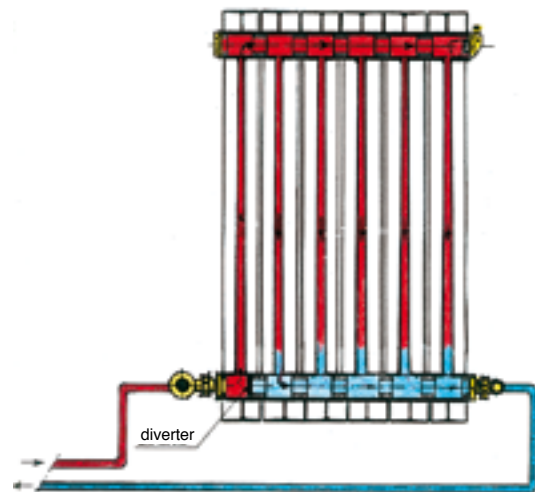


## CORRECT INSTALLATION, USE AND MAINTENANCE INSTRUCTIONS

- \* The Oscar and Oscar Tondo radiators can be used in all hot water or vapour heating installations up to 110°C with a working pressure up to 1600 K Pascal - 16 bar.
- \* They can be installed in systems with iron, copper or thermoplastic pipes.
- \* In order to protect the system from scaling and corrosion processes, which affect radiators, pipes and boilers, the UNI-CTI 8065 Standard provides for the treatment of the filling water of the system, without distinguishing between aluminium, steel or cast iron.
- \* Among the various products to be added to the system in accordance with the abovementioned UNI Standard, there is a specific one for aluminium, an aliphatic film-forming polyamine marked under the name Cillit-HS 23 Combi (recommended dosage: 1 litre for every 200 litres of water circulating in the system). However, it is useful to check the pH value of the water, which should preferably be between 6.5 and 8.
- \* It is recommended to install automatic air vent valves on each radiator.
- \* Avoid closing the radiator shut-off valves completely in order to allow any gas that may be inside the radiators to escape through the automatic air vent valve that is compulsory in every heating system, thus avoiding possible overpressure that could damage the radiators.
- \* If one or more batteries are to be excluded from the circuit, an automatic air vent must be fitted to each battery.
- \* For a good preservation of the paint, it is necessary that the radiators, before and after installation, are not kept in very humid environments (inside showers, in saunas, in Turkish baths, near swimming pools, etc.). If paint comes off at one point on the radiator, aluminium oxide con from and cause the paint to peel off completely. Do not use porous clay humidifiers.
- \* To clean the outside of the radiator, do not use abrasive or chemically corrosive/aggressive products of any kind, as the use of water and neutral detergents is sufficient and the operation must be carried out when the radiator is cold to preserve the original brilliance of the paint over time.
- \* Do not place weights and/or objects on the radiators. Do not use radiators for any purpose other than as a heater (e.g.: as a bench/stand, ladder, to store furniture or objects).

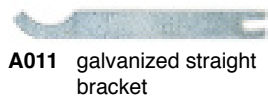
## ADDITIONAL NOTES FOR OSCAR AND OSCAR TONDO

- \* **Important:** if the Oscar and Oscar Tondo radiators are connected hydraulically with the connections at the bottom on opposite sides, it is useful to insert a diverter (art. A022) between the first and the second section. This prevents abnormal circulation of the thermal fluid, thus guaranteeing maximum performance of the heater.





# accessories



**A011** galvanized straight bracket



**ANGLE BRACKET**  
**A003** galvanized  
**A003** white plastic



**A025** 170 mm white expansion plug bracket white (pair)

**A026** 170 mm white expansion plug bracket special colours (pair)



**A027** universal brackets white blister pack (pair)



**A029** square brackets white blister pack (pair)



**A024** O-ring gasket for Ekos Plus, Oscar, Oscar Tondo, Junior



**A017** RAL 9010 white marker



**A237** white handy grip  
**A238** chrome handy grip



#### TOWEL RAILS

**A201** 48 cm white  
**A202** 48 cm chrome  
**A207** 32 cm white  
**A208** 32 cm chrome



#### SIDE PANEL

RAL 9010 WHITE  
**A061** mod. 1000  
**A062** mod. 1200  
**A063** mod. 1400  
**A064** mod. 1600  
**A065** mod. 1800  
**A066** mod. 2000



**A022** diverter for Oscar, Oscar Tondo, Ekos Plus



**A010** RAL 9010 white spray can  
**A010** special colours spray can



#### REDUCER KIT WITH SILICONE GASKETS AND ADJUSTABLE VALVE

**A043** 3/8" for 200/D radiators - 800 mm white or chrome  
**A044** 3/8" for 900 to 2000 mm radiators and Junior white or chrome  
**A046** 1/2" for 200/D radiators - 800 mm white, chrome or special colours  
**A047** 1/2" for 900 to 2000 mm radiators and Junior, white, chrome or special colours  
**A048** 3/4" for 200/D radiators - 800 mm white or chrome  
**A049** 3/4" for 900 to 2000 mm radiators and Junior, white or chrome



**A009** 1" nipple



**A018** Cillit HS 23 Combi liquid



**A079** hex key with lever  
**A080** hex key 500 mm  
**A081** hex key 800 mm



1" BLIND PLUG OR REDUCER  
**A005** white  
**A006** galvanized  
**A020** white with silicone gasket



**A013** 1" float type air vent valve right or left



#### MANUAL AIR VENT VALVE

**A012** 1/8"  
**A039** 1/4"  
**A040** 3/8"



**A041** 1/2" adjustable manual air vent valve - white



**A042** 1/2" automatic air vent valve - chrome



**A038** 1/2" adjustable manual air vent valve - chrome



**A019** plug wrench

**standard colour** | **special colours** see the Colour Card

cod. 10  
white glossy  
RAL 9010

cod. 11  
white sand  
RAL 9016

cod. 01  
ivory glossy  
RAL 1013

cod. 05  
metallic  
matt beige  
2589

cod. 06  
metallic  
matt quartz  
2921

cod. 07  
metallic matt  
dark grey  
2748

cod. 08  
metallic matt  
silver grey  
2676

cod. 09  
metallic matt  
rust  
3112



**GLOBAL** di Fardelli Ottorino & C. s.r.l.

24060 ROGNO (BG) ITALIA • via Rondinera, 51  
tel. ++39 **035977111** • fax ++39 **035977110**  
**globalradiatori.it** • info@globalradiatori.it

